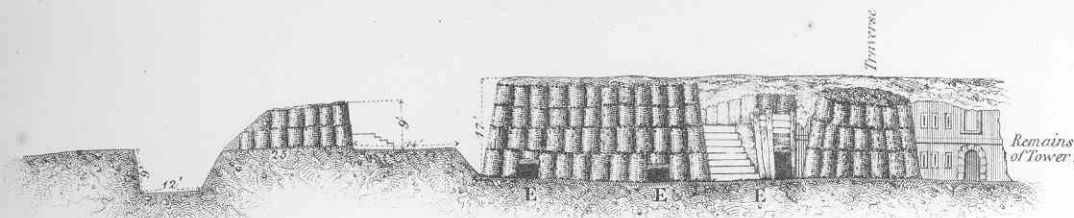


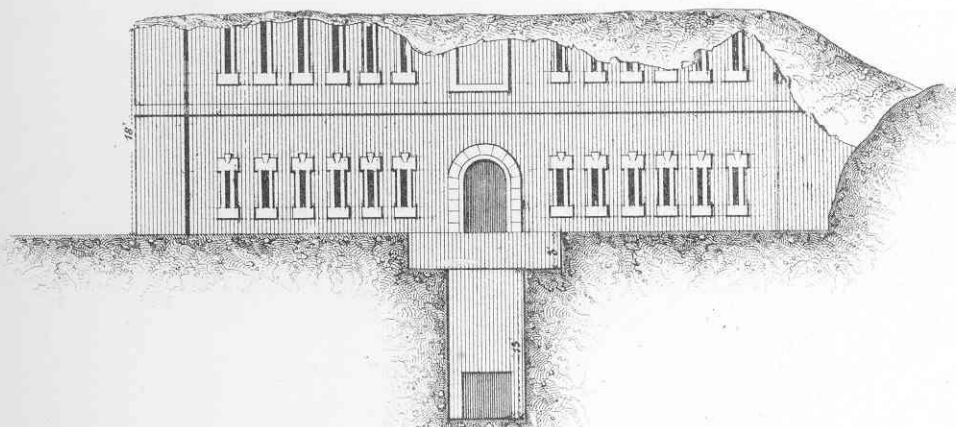
The Malakoff Fort at Sevastopol, Crimea 1854-55

ON I K. $\frac{1}{480}$



E. Entrances to Bombproofs.

ELEVATION $\frac{1}{200}$

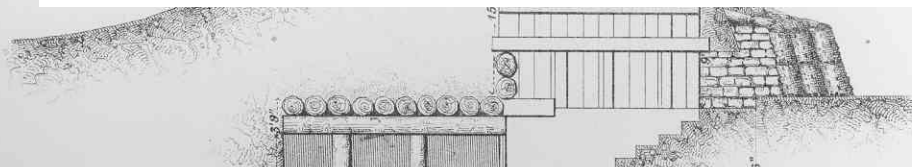


SEC

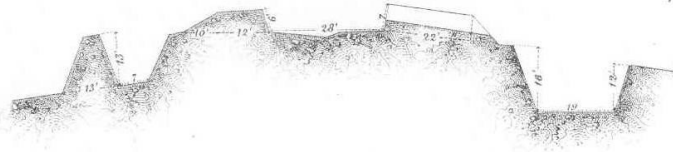
OF A RUSSIA

Longitudinal $\frac{1}{200}$

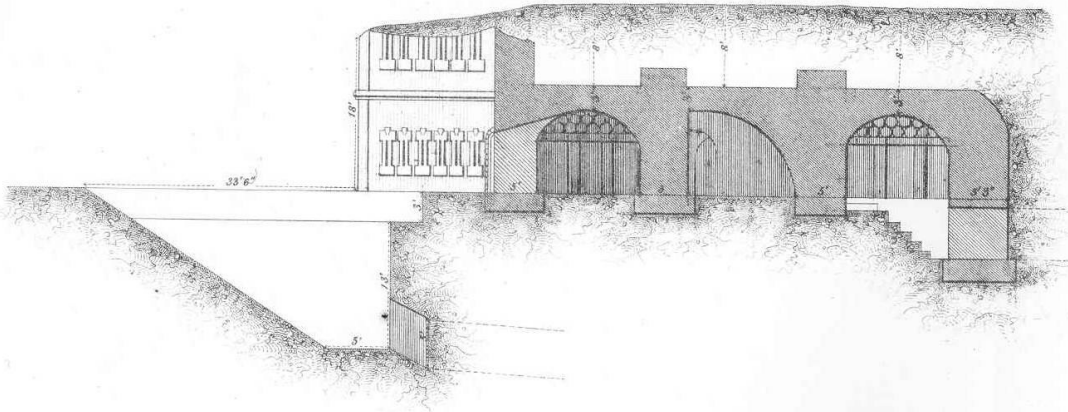
The Malakoff Fort at Sevastopol, Crimea 1854-55
Elevation



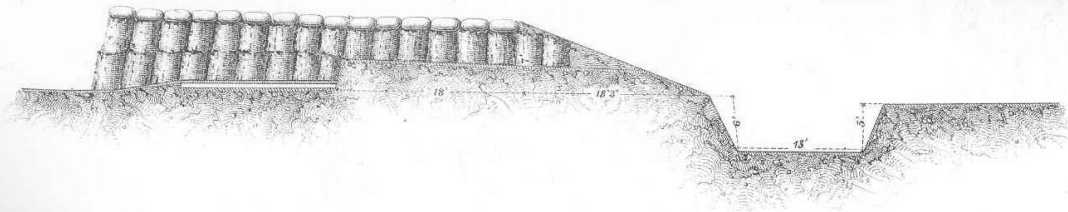
ON UV. 400



ON A.B. 300



Section thro' a Battery 200



DETAILS OF THE TOWER

PLAN

